

产品特点 Introduction

- ◆ 圆柱形铝外壳，高性能树脂灌封；
Cylindrical aluminum shell packaging, high-performance resin filling;
- ◆ 铜端子引出，塑料定位盖绝缘，安装简单方便；
Copper screw leads, insulated plastic cover positioning, easy installation;
- ◆ 可承受高纹波电流；
High Irms rating;
- ◆ 可承受高的峰值电流；
High I rating;
- ◆ 自感低；
Low Ls;
- ◆ 能适应高温高湿环境、可靠性高、寿命长；
Can adapt to high temperature and high humidity environment, High reliability and life expectancy;
- ◆ 具有自愈性；
With self-healing;
- ◆ 非极性介质。
Non-polar.

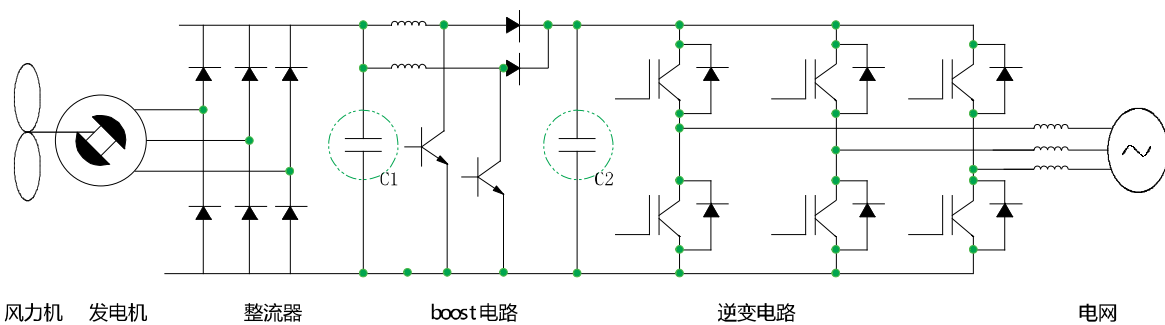
应用领域 Applications

- ◆ 大功率变频器；
DC-linking and DC-filtering in frequency converter;
- ◆ 风电变频器、光伏逆变器；
DC-linking wind and solar power converter;
- ◆ UPS、SVG、APF；
UPS, SVG, APF system;
- ◆ 电动汽车及混合动力机车、电力机车。
EV/HEV, Railway applications - Rolling stock equipment.

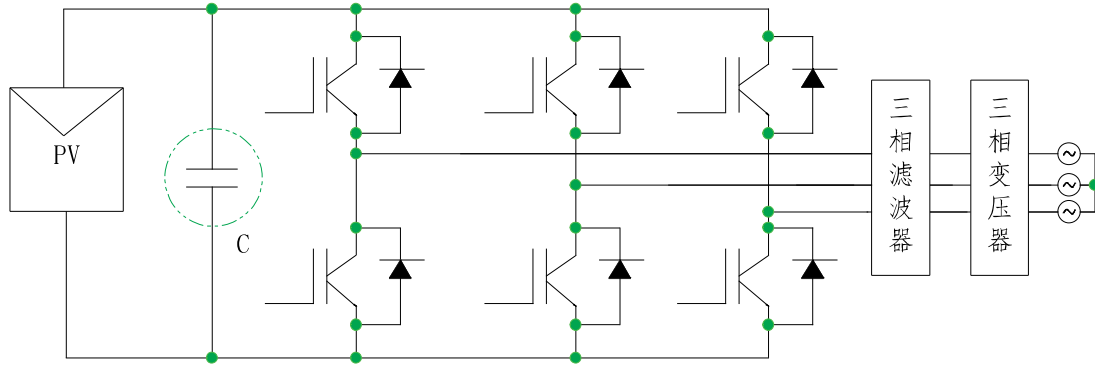
技术参数 Parameter

额定电压	U_N	900Vdc ~ 2000Vdc
标称电容量	C_N	82 μ F ~ 2200 μ F
容量等级	Tolerance	$\pm 5\%$ 、 $\pm 10\%$
极间耐压	U_{t-t}	$1.5U_{NDC}$ (10s)
极壳耐压	U_{l-c}	$2U_i + 2000$ (10s)
极间绝缘电阻	Insulation Resistance	$RC \geq 10000s$ (500V)
损耗角正切	$\tan \delta$	≤ 0.0020 (100Hz)
热点温度	θ_{hs}	85 $^{\circ}$ C
运行环境温度	Operating Temperature	-40 $^{\circ}$ C ~ +85 $^{\circ}$ C
储存温度	Storage Temperature	-40 $^{\circ}$ C ~ +85 $^{\circ}$ C
阻燃等级	Flame Retardation	UL94 V-0
最大电极扭矩	Torque of terminals	M6: 10N · m, M8: 12N · m
海拔高度	Altitude	$\leq 4000m$
预期寿命	Life expectancy	100 000h (85 $^{\circ}$ C、 U_N 、 $\Delta C/C \leq \pm 3\%$)
参考标准	Reference standards	IEC 61071、IEC 61881

系统应用图 System application diagram

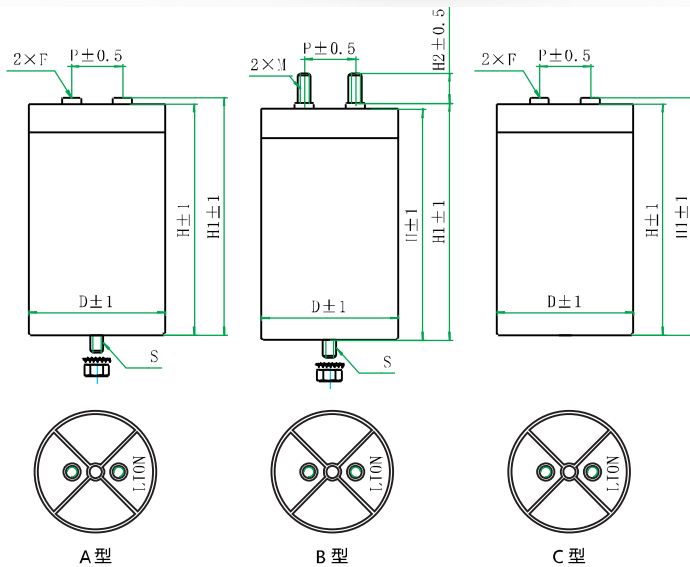


永磁风能发电逆变电路
Inverter circuit of permanent magnet wind power generation



太阳能电池板逆变电路原理图
Schematic diagram of solar panel inverter circuit

外形图 Outline Drawing



选型表 Specifications table

C _N μF	I _{max} A			I _r A	I _s kA	ESR mΩ 1kHz	L _s nH 1MHz	R _{TH} K/W	D mm	H mm	H1 mm	P mm	Weight kg	Part No.
	45°C	55°C	60°C											
U_N=900Vdc U_S=1350Vdc U_{L-C}=4 000Vac														
270	70	61	52	3464	17.3	0.8	40	4.2	76	96	101	32	0.6	90900D00270uJN3**19
330	85	75	64	4234	21.2	0.6	40	3.4	86	96	101	32	0.8	90900D00330uJN3**19
390	44	36	31	2185	10.9	1.2	40	4.7	86	103	108	32	0.7	90900D00390uJN3**19
470	67	59	51	3338	16.7	1.4	40	2.4	76	146	151	32	0.8	90900D00470uJN3**19
560	80	70	60	3977	19.9	1.2	40	2.0	86	155	160	32	1.1	90900D00560uJN3**19
680	100	91	78	5176	25.9	0.9	40	1.6	96	155	160	45	1.4	90900D00680uJN3**19
1000	100	100	98	5944	29.7	0.8	45	2.2	96	180	185	45	1.7	90900D01000uJN3**19
1200	100	100	96	5859	29.3	1.0	45	1.8	96	225	230	45	2.0	90900D01200uJN3**19
1400	100	100	100	6809	34.0	0.6	50	2.3	116	180	185	50	2.4	90900D01400uJN3**19
1800	100	100	100	7191	36.0	0.7	50	1.8	116	230	235	50	3.0	90900D01800uJN3**19
2200	100	100	100	9420	47.1	0.5	55	1.4	136	225	230	50	4.0	90900D02200uJN3**19
U_N=1000Vdc U_S=1500Vdc U_{L-C}=4 000Vac														
300	39	32	27	1929	9.6	1.4	40	5.4	86	103	108	32	0.7	91000D00300uJN3**19
360	59	52	45	2946	14.7	1.6	40	2.8	76	146	151	32	0.8	91000D00360uJN3**19
500	82	72	62	4092	20.5	1.1	40	2.0	86	155	160	32	1.1	91000D00500uJN3**19
600	83	76	68	4126	20.6	1.1	45	3.2	86	180	185	32	1.3	91000D00600uJN3**19
700	79	72	65	3938	19.7	1.5	45	2.8	86	224	229	32	1.6	91000D00700uJN3**19
900	100	93	83	5063	25.3	1.1	45	2.1	96	225	230	45	2.0	91000D00900uJN3**19
1100	100	100	100	6188	30.9	0.6	50	2.6	116	230	235	50	3.2	91000D01100uJN3**19
1400	100	100	100	6444	32.2	0.7	50	2.1	116	230	235	50	3.0	91000D01400uJN3**19
1800	100	100	100	8285	41.4	0.6	55	1.6	136	225	230	50	4.1	91000D01800uJN3**19
U_N=1100Vdc U_S=1650Vdc U_{L-C}=4 000Vac														
170	170	57	50	3000	15.0	0.8	40	5.2	76	96	101	32	0.6	91100D00170uJN3**19
300	300	63	55	3500	17.5	1.5	40	2.0	76	146	151	32	0.8	91100D00300uJN3**19
350	350	66	57	3745	18.7	1.0	40	2.3	86	136	141	32	1.0	91100D00350uJN3**19
420	420	65	56	3677	18.4	1.3	40	2.2	86	155	160	32	1.1	91100D00420uJN3**19
500	500	67	61	3678	18.4	1.3	45	3.6	86	180	185	32	1.3	91100D00500uJN3**19
680	680	75	67	4093	20.5	1.4	45	2.7	86	224	229	32	1.6	91100D00680uJN3**19
U_N=1200Vdc U_S=1800Vdc U_{L-C}=4 000Vac														
150	53	46	40	2617	13.1	1.0	40	5.7	76	96	101	32	0.6	91200D00150uJN3**19
220	33	27	23	1645	8.2	1.6	40	6.4	86	103	108	32	0.7	91200D00220uJN3**19
300	70	62	53	3489	17.4	1.1	40	2.5	86	136	141	32	1.0	91200D00300uJN3**19
360	69	60	52	3426	17.1	1.3	40	2.4	86	155	160	32	1.1	91200D00360uJN3**19
420	68	62	55	3358	16.8	1.4	45	4.0	86	180	185	32	1.3	91200D00420uJN3**19
560	90	82	74	4478	22.4	1.1	45	3.0	96	180	185	45	1.7	91200D00560uJN3**19
700	92	84	75	4579	22.9	1.3	45	2.4	96	225	230	45	2.0	91200D00700uJN3**19
850	100	99	94	5560	27.8	0.7	50	2.9	116	180	185	50	2.4	91200D00850uJN3**19
1400	100	100	100	7493	37.5	0.6	55	1.8	136	225	230	50	4.0	91200D01400uJN3**19
U_N=1400Vdc U_S=2100Vdc U_{L-C}=4 000Vac														
100	42	37	32	2094	10.5	1.2	40	4.7	76	96	101	32	0.6	91400D00100uJN3**19
180	42	36	31	2056	10.3	2.2	40	3.9	76	146	151	32	0.8	91400D00180uJN3**19
380	60	55	49	2983	14.9	1.9	45	3.6	86	224	229	32	1.6	91400D00380uJN3**19
480	76	69	62	3768	18.8	1.5	45	2.9	96	225	230	45	2.0	91400D00480uJN3**19
560	88	79	75	4396	22.0	0.9	50	3.7	116	180	185	50	2.4	91400D00560uJN3**19
700	90	80	76	4496	22.5	1.0	50	3.0	116	230	235	50	3.0	91400D00700uJN3**19
1000	100	100	100	6423	32.1	0.7	55	2.1	136	225	230	50	4.0	91400D01000uJN3**19
U_N=1800Vdc U_S=2100Vdc U_{L-C}=5 000Vac														
110	33	29	25	1614	8.1	2.8	40	5.2	76	146	151	32	0.8	91800D00110uJN3**19
200	46	41	35	2292	11.5	2.5	45	4.7	86	180	185	32	1.3	91800D00200uJN3**19
220	45	41	37	2220	11.1	2.5	45	5.0	86	224	229	32	1.6	91800D00220uJN3**19
450	75	67	63	3714	18.6	1.2	50	3.7	116	230	235	50	3.0	91800D00450uJN3**19
600	100	89	84	4952	24.8	0.9	55	2.8	136	225	230	50	4.0	91800D00600uJN3**19
U_N=2000Vdc U_S=3000Vdc U_{L-C}=5 000Vac														
82	29	25	22	1412	7.1	3.2	40	5.9	76	146	151	32	0.8	92100D00082uJN3**19
170	41	37	33	2012	10.1	2.8	45	5.6	86	224	229	32	1.6	92100D00170uJN3**19
260	62	56	53	3097	15.5	1.2	50	5.4	116	180	185	50	2.4	92100D00260uJN3**19
320	62	56	53	3099	15.5	1.5	50	4.4	116	230	235	50	3.0	92100D00320uJN3**19
450	88	78	74	4358	21.8	1.0	55	3.1	136	225	230	50	4.0	92100D00450uJN3**19

注：1、以上参数仅作参考，以实际规格书为准；

1、The above parameters for reference only, see the specification for details.